

Spring

HOME

IMPROVEMENT 1

- **The basics of molding replacement projects**
- **Don't get shocked by home electric safety issues**
- **Simple ways to breathe new life into a foyer**

MAKING YOUR HOME *Beautiful* Inside and Out



Interior Painting • Exterior Painting • Wallpaper Removal
Drywall Repairs • Cabinetry Painting • New Construction
Residential Painting • Commercial Painting
Epoxy Flooring: Basements, Garages, Businesses,
Patios, Countertops

Joseph D. Rivers Owner

Rivers Painting of CNY Inc.

Call/Text 607-745-5370

Email: Joe@josephriverspainting.com

Email: Jrivers1119@gmail.com

The basics of 3 popular siding materials

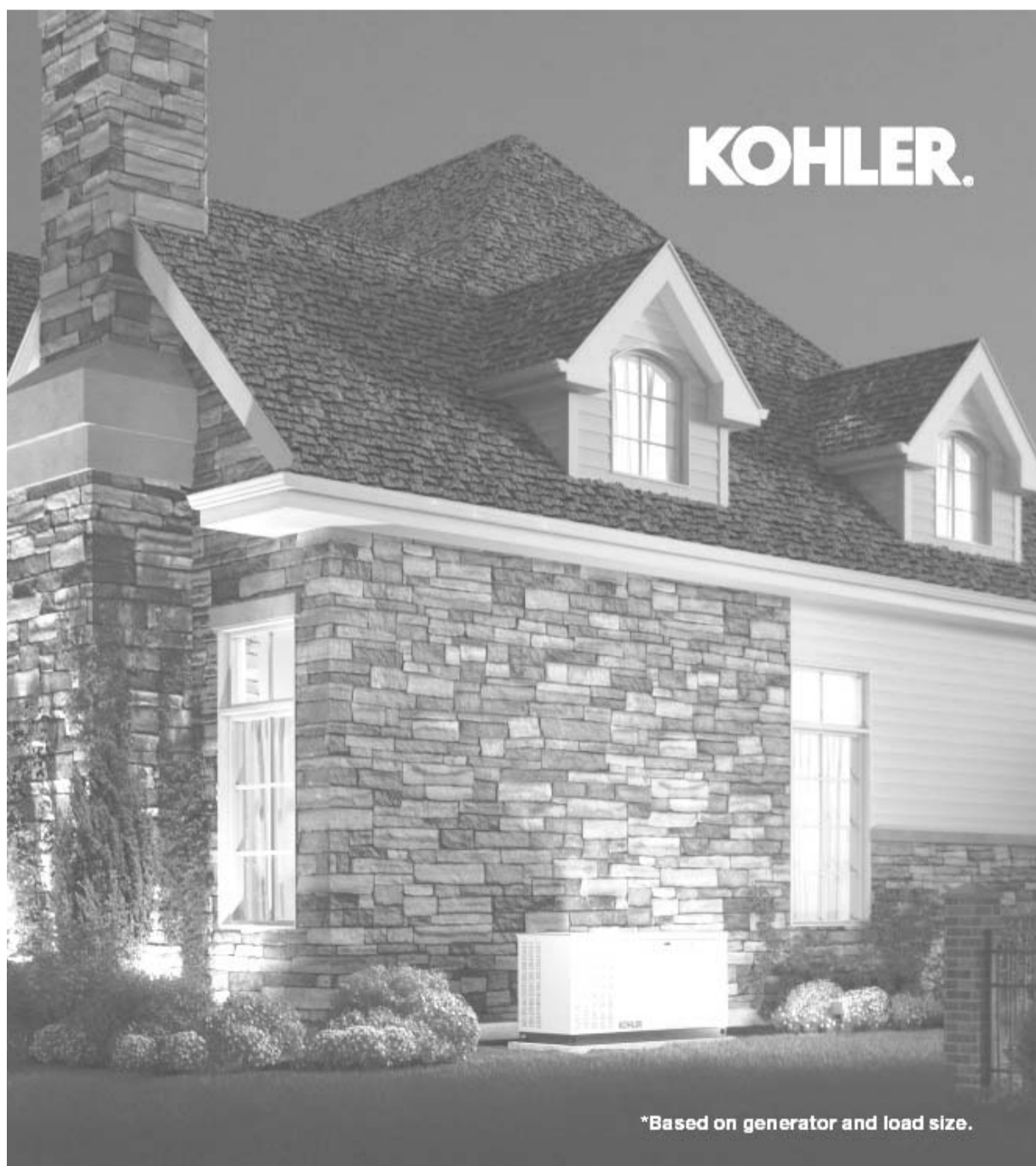
Few home renovation projects can change the look of a home as significantly as new siding. New siding can make a home look brand new, and a new color can dramatically change the perception of a home. As homeowners begin to consider siding replacement projects, they might be surprised to learn their options in relation to materials are so numerous. Though it's great to have options, it also can be difficult to pick a material when there are so many products to choose from. Vinyl, fiber cement and wood are three popular siding materials, and understanding the characteristics of each can help homeowners make more informed decisions.

Vinyl

Vinyl siding has long been among the most popular siding materials. The National Association of Home Builders notes that popularity has declined in recent years, with the market share of vinyl siding dropping 5 percent over the last decade and nearly 13 percent over the last 20 years. Despite that declining popularity, vinyl remains a strong option for many homeowners due to its affordability and minimal maintenance requirements. Consumer Reports also notes that vinyl siding is impervious to insects and water, an attribute that's highly appealing to many homeowners.

Fiber cement

Consumer Reports notes that fiber cement siding blends cement, sand and cellulose. Many homeowners like fiber cement siding because of its aesthetic appeal, as it looks like real wood without the vulnerabilities



KEEP YOUR POWER ON, EVEN WHEN THE POWER'S OUT.

Whenever there's an outage, KOHLER® generators keep your lights on, your fridge cold and your house cozy. And they can power your entire home.* No matter the weather, we're with you.

**From engines to generators,
we give the world power.**

AVOLIO
— BROTHERS, LLC —
Plumbing • Heating • Air Conditioning

Commercial | Residential | Industrial
Custom Duct Fabrication

607-336-5572

6053 Co. Rd. 32, Norwich, NY 13815
www.avoliobrothers.com
brothers@centralny.twcbc.com

*Based on generator and load size.



associated with wood (see below). The home renovation experts at This Old House report that fiber cement siding has exceptional durability and offers great resistance to environmental factors like harsh weather, UV rays and moisture. Fiber cement siding also is a low-maintenance, insect-resistant option that won't warp or rot. Fiber cement siding is not easily installed, which contributes to a higher overall cost.

Wood

Siding materials don't get much more traditional than wood. It shouldn't surprise homeowners to learn that wood siding can warp or rot, and anything made from wood can be vulnerable to insects. However, well-maintained wood siding can be very durable and certain types are less vulnerable to rot than others. Local climate will affect which wood siding options are best for a given area. Many see wood siding as characteristic of a high-end home, making the somewhat higher price tag compared to vinyl siding easier to justify. There's no right or wrong decision when choosing siding materials for a home. Homeowners are urged to do their homework, including studying cost and the local climate, before choosing a material for their home. SH262600

DOES YOUR BASEMENT FLOOD?

Tired of a wet, musty smelling basement?

WE CAN HELP!



Basement Waterproofing, Foundation and Crawl Space Repair

Southern Tier Basement Systems offers basement waterproofing, foundation and crawl space repair solutions in your area. We are part of the world's largest basement waterproofing contractor network, Basement Systems, Inc.

All of our waterproofing experts are trained and certified by Basement systems Headquarters in Connecticut, USA.



Basement & Crawl Space Specialists®
Endicott, NY • www.southerntierbasementsystems.com

Protect your home with our **PROVEN SOLUTIONS** and **LIFETIME WARRANTY!**

Call today for a **FREE ESTIMATE**
607-205-1430

Spring Into Savings with



Ready to make your home more comfortable — and energy-efficient — this season?

SPRING HOME IMPROVEMENT SPECIAL!

- ✓ Save on spray foam for Attics, Crawl Spaces, Walls, Barns & More!
- ✓ Reduce Energy Bills & Improve Comfort Year-Round
- ✓ Seal Drafts & Stop Moisture Problems

Contact Nichols Spray Foam Today!

- ✓ Fast, Professional Service You Can Trust
- ➡ Get Your **FREE** Estimate this Spring!

nicholssprayfoam.com

Call Us: 607-267-3549

Email: Nicholssprayfoam@yahoo.com

Hours: Mon-Sat 7am - 5pm, Closed Sun.

410 Shaw Brook Road, South New Berlin

Don't wait — Spring is the Perfect Time to Upgrade Your Home!



BYLER'S COUNTERTOP CREATIONS, LLC

BYLER'S CABINETS, LLC



YOUR ONE STOP SHOP FOR ALL YOUR KITCHEN CABINET & COUNTERTOP NEEDS.



Looking to update your dining room or bedroom furniture? Come check out our NEW showroom today!

Custom Built Countertops & Kitchen Cabinets - Quality Service & Customer Satisfaction.

CALL US TODAY FOR A FREE ESTIMATE!
315-867-4189

713 State Hwy 162, Sprakers, NY 12166



Help Celebrate our 20th Anniversary!

Get 20% OFF

Your New Home Security System!
New Customers Only

Call 607-771-0598 Today!

*Intrusion Alert Systems • Fire Protection Systems
Advanced Sensors • Professional Installation
24/7 Monitoring*



Don't get shocked by home electric safety issues

Electricity helps run the world, including our homes and businesses. Without electricity, we'd have no access to lighting, our interior spaces may not be heated or cooled effectively, and the computers and other devices we rely on so heavily would not run.

Even though electricity is designed to make people's lives more convenient, it's easy to take it for granted and become complacent about the safety needed to use it effectively. The Electrical Safety Foundation International says each year electrical malfunctions account for 35,000 home fires causing more than 1,130 injuries, 500 deaths and \$1.4 billion in property damage. Since the average American home was built in 1977, many existing homes of this age and older simply cannot handle modern demand for electricity without modification.

The following are some warning signs that electrical issues could lead to bigger problems:

- Tripping of circuit breakers or blowing of fuses regularly
- Dimming of lights when other devices are in use
- Buzzing sounds from outlets or switches
- Discolored outlets
- Seemingly underpowered appliances

Additional warning signs can include a tingling feeling when an electrical appliance is touched, rubbery smells or an aroma of burning.

Individuals can take certain precautions to ensure electrical safety at home and at work. Here are nine guidelines to follow, courtesy of the National Fire Protect.

1. Have any home you are buying or renting inspected by a qualified



- SEPTIC PUMPING
- PORTABLE TOILET RENTALS
- DRAIN CLEANING
- SEPTIC RISER INSTALL
- SEPTIC INSTALLATIONS
- SEPTIC CAMERA INSPECTIONS
- SEWER JETTING
- EXCAVATION



WWW.TRIVALLEYSEPTIC.COM

Landscape Design



- Field Stone Walls
- Wall Repair
- Stone Walkways
- Hedge Trimming
- Fruit Tree Pruning
- Tree Planting-Mulch

Fully Insured

susquehannalandscapingllc.com

SUSQUEHANNA LANDSCAPING LLC
607-226-1970



private inspector in accordance with local requirements.

2. When electrical work is needed, hire a qualified, licensed electrician.
3. Use only one heat-producing appliance plugged into a receptacle outlet at a time.
4. Do not use extension cords for major appliances like ovens, washers, stoves or microwaves. They should be plugged directly into a wall receptacle outlet.
5. Ground-fault circuit interrupters (GFCIs) should be installed in kitchens, bathrooms, garages, and basements to shut off an electrical circuit when it becomes a shock hazard.
6. Extension cords should only be used temporarily. Have an electrician install more outlets if they are needed.
7. Keep the area around the electric meter clear.
8. Make sure outdoor lights and other fixtures are rated for outdoor use.
9. Label the circuit breakers to understand the different circuits in the home and know which to turn off when electrical work is being conducted.



It doesn't take much for an electrical issue to become serious and start a fire or cause shocking. Treat all electricity use in a home or business seriously. TF235980

CUT YOUR ENERGY COSTS THIS SPRING!



GILBERT PLUMBING & HEATING



- ✓ Lower Utility Bills
- ✓ Better Performance
- ✓ Avoid Breakdowns



- New Gas, Oil & Electric Heating System Installation
- Heating System Repairs & Cleaning
- Water Heater Installation & Service
- Septic System Installation and Repair
- All Aspects of Plumbing

Now offering mini splits and heat pumps

Serving Otsego, Delaware and Chenango Counties

607-783-2289

www.gilbertph.com  Find us on Facebook



Don't Buy a Pole Barn Package Until You've Contacted Us!

We Offer Competitive Pricing and Guarantee Satisfaction.

POLE BARN PACKAGE



24' X 32' X 10' POST FRAME PACKAGE:

Call for current pricing

Designed to meet Your Needs



SHEDS AVAILABLE NOW!

Call Today for Your FREE Quote!

• MATERIAL PACKAGE

- Pre-Engineered Wood Trusses (6/12 Pitch, 4' O/C)
- 4.125 x 5.187 Structural Glulam 3 Ply Eave Posts (8' O/C)
- 4.125 x 5.187 Structural Glulam 3 Ply Gable Posts (10' O/C)
- 2 x 8 Treated Skirt Boards (1 Row)
- 2 x 4 Wall Girts (24" O/C) and Roof Purlins (24" O/C)
- 2 x 10 Double Top Girt Truss Carrier
- 1/4" M W I Dbl. Bubb. Dbl. Foil Temp Shield Insulation on Roof
- Beige Everast II Traditional Steel Siding
- Ivy Everast II Traditional Steel Roof
- One Bag of Concrete Mix Per Post Hole

• DOORS & WINDOWS

- Two Clopay 9 x 8 4300 Series Ins. Overhead Door Ins. Stds
- One 3' 9 Lite Entry Door

• 12" OVERHANG ON ALL SIDES W/ VENTED ALUM. SOFFIT

• FASTENERS

- 1 1/2 Inch Screw for Steel Wall, Roof Panels
- 5 In. Ledger Lock Screw for Truss Carrier
- 3 1/2 In. Galv. Pole Barn Nails for Skirt Board
- Galvanized Steel Framing Nails

• DETAILED BUILDING PLANS



2726 State Hwy. 7, Bainbridge, NY
(Located Between Rte. 8, Sidney and Bainbridge, NY)
607-967-4877
www.metalroofingandmetalsiding.com



A PLUS TREE SERVICE LLC



REMOVALS

STUMP GRINDING

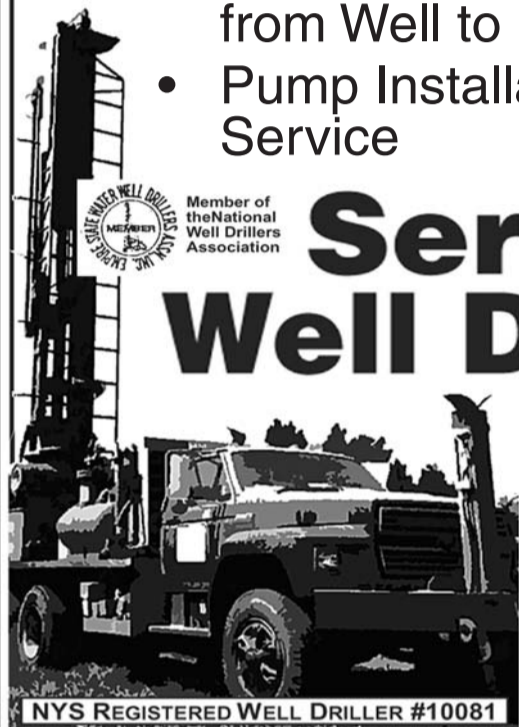
TRIMMING

Free Estimates Fully Insured

607-226-1374

Water Water Water... WE DRILL WELLS

- Professional Service from the Owner
- Knowledgeable
- Fully Insured
- Water Conditioning Service
- Complete Job from Well to Pump
- Pump Installation, Parts & Service



Sergi's Well Drilling

Greene, NY

ESTABLISHED IN 1976

Mike Sergi
Owner/Operator

CALL TODAY
607-656-8442

NYS REGISTERED WELL DRILLER #10081

www.sergiswelldrilling.com

Simple ways to breathe new life into a foyer

A foyer may not garner as much attention as a kitchen, living room or formal dining space, but the entryway to a home is the first place residents see upon arriving home and it's also where guests begin to form their impression of a home. That makes a foyer an important, if easily overlooked, space in a home. Homeowners hoping to give their entryways a little something extra can consider these simple means to breathe new life into a foyer.

- Add seating. If a foyer is large enough to accommodate one or two armchairs, such an addition can immediately contribute to a welcoming and comfortable ambiance. Upholstered chairs can offer some color and provide a space for residents and guests to put on and remove their footwear.
- Make a statement with lighting. Foyer lighting is meant to make an entryway warm and welcoming, but it also can be used to make a statement. An impressive pendant light fixture in the foyer can make a strong first impression on guests and establish a vibe residents can keep in mind when addressing other interior spaces throughout the home.
- Conquer clutter. Foyers big and small can feel a little claustrophobic if there's too much going on. Though furnishings like seating and console tables can dress up a space, make a concerted effort to ensure they don't become dumping grounds for outerwear and unread mail. In addition, designate an ideally concealed space to store footwear if the foyer will serve as residents' primary entryway.
- Add some artwork. If an existing foyer lacks personality, some simple



Based in Walton, NY

Built on Community.
Proven by Reputation.

FREE ESTIMATES
AVAILABLE

Locally Owned.
Fully Insured.
Community
Trusted.

JUNK REMOVAL CLEAN-OUTS • PROPERTY SUPPORT

Professional junk removal and clean-out services for residential, commercial, municipal, and property management clients throughout Delaware, Chenango, Otsego, and Schoharie Counties.

SERVICES

- Junk Removal
- Estate & Real Estate Clean-Outs
- Tenant Turnover Clean-Outs
- Storage Unit Clean-Outs
- Whole Property & Exterior Cleanups
- Junk Vehicle Removal
- Camper, Travel Trailer & Motorhome Removal
- Light Demolition & Debris Hauling
- Commercial & Municipal Services
- Ongoing Service & Retainer Options
- Buy-Back & Resale Options on select items

Call or Text Devin Doenges:
607-287-4321 • 607-510-0313



artwork can add a pop of color without overstimulating residents and guests. Artwork can be hung above a console table to create a calm and welcoming vibe. Homeowners can even utilize artwork to change the vibe in the entryway so it reflects the seasons, hanging a picturesque winter landscape painting or print when the weather is cold and some bright and breezy beach art come the summertime.

- Incorporate plants into the entryway. Plants can add vibrancy and a pop of color to an entryway. Plants also can brighten up the space. If the foyer tends to be a bit dark throughout the day, consider faux plants so residents and guests are not greeted with withered, sun-starved greenery upon entering the home.

A foyer is easily overlooked when designing a home's interior. But an inviting entryway can set the tone for other interior spaces in a home. HI264731



FINANCING AVAILABLE ON YOUR ENTIRE PURCHASE



+



NORWICH OUTDOOR POWER EQUIPMENT

5876 County Rd. 32- East River Road, Norwich
607-334-4378 • www.norwichope.com

Hours:
8:00-5:00 Monday-Friday
and
8:00-12:00 on Saturday

Wakeman 1 Gravel Bank



**Roll Off
Dumpsters
For Rent**

Unadilla, New York
**Screened Gravel, Stone
Products & Cobbles**

Delivery Available

607-434-4132

A Different Kind of Energy Company



NEW PROPANE CUSTOMERS

NEW OIL CUSTOMERS

**GET YOUR
FIRST FILL
FOR 99¢ PER
GALLON**

OR

**GET 25¢ OFF
PER GALLON
ON YOUR
FIRST ORDER**

Terms and conditions apply. New customers only.



Call Today 800-723-2583

Sign up online

www.blueoxenergy.com

Improving storage in common areas

Increasing storage capabilities at home is a popular goal among many homeowners and renters. Despite how much space a person may have at home, there's often a desire to have more or maximize the areas that are there. According to the Self-Storage Almanac, there are an estimated 51,206 storage facilities operating in the United States today, and MJ Partners Self-Storage Update says 11.1 percent of households currently rent at self-storage facilities. IBISWorld indicates the Canadian self-storage industry has grown at an average annual rate of 3.1 percent over the last five years.

People often turn to external storage facilities to house their belongings when space is at a premium at home. Others may focus their organization energy on closets, garages and basements to free up room. But common areas around the home also can provide additional sources of storage. Common areas are locations where people come together for activities.

Living room/ Family room

Living rooms and family rooms are areas of the home where people spend many hours. These tend to be multifunctional spaces where people entertain, lounge and even enjoy movies or gaming. Possibilities in these living spaces that can create extra storage include furniture that serves double-duty. For example, a storage ottoman adds decorative appeal but also can be filled with board games or books. Cabinet-style TV stands may not be as streamlined as mounted versions, but they're ideal places to stash games, remote controls and other accessories.

Entryway

An entryway or mudroom can quickly succumb to clutter. When



organizing such a space, think about the needs of the household. A storage bench will be a place where everyone can sit to put on shoes, and then stow footwear underneath when not in use. A wall-mounted rack can hold the current season's jackets or sweaters, as well as purses or backpacks for easy access. A shelf with some hooks can store keys or hold a basket to store the daily mail.

Hallway and Closet

Closet organization systems can be the unsung heroes in closets utilized by multiple members of the family. These customizable components can be sized accordingly for the space, and then configured as needed with a balance of shelves and hanging racks. An out-of-the way nook or long hallway can be enhanced with a bookshelf to hold photo albums or that library that only continues to grow as new reading material is acquired. Homeowners can make common areas more functional with the addition of storage. TF23C528

RETRACTABLE FABRIC ROOF & LOUVERED PERGOLA® AWNINGS

SUNAIR AWNINGS AND PERGOLAS OFFER ENDLESS POSSIBILITIES AND ARE THE ULTIMATE PROTECTION FOR YOUR PATIO OR DECK.



MOTORIZED ADJUSTABLE PERGOLAS



RETRACTABLE PATIO AWNINGS



ROLL DOWN BUG SCREENS

UP TO **\$250 OFF**

**SUNAIR® OR
SUNTUBE® MODEL
LATERAL ARM
SUNAIR**

With this coupon. Must submit at time of order. Not valid with other offers or previous sales. Offer available on installed lateral arm awnings only purchased at regular price. Expires 7-30-26.

No Power? No Problem!

AGP PELLET STOVE
BURNS ALL GRADES OF WOOD PELLETS

The Most Reliable Pellet Stove on the Planet!

- Easy To Operate
- Easy To Maintain
- Easy To Live With



Don't be left out in the cold this winter. A Fireplace Xtrordinair® or Lopi® hearth appliance can provide your family with warmth & comfort even when the power goes out! P.S. - You can even use your Lopi to cook on! Now is the perfect time to invest in a beautiful Fireplace Xtrordinair® or Lopi® gas or wood heater. Come see our vast selection of fireplaces, inserts and stoves that can add the ambiance of fire to any home. Talk to us about your creative vision of fire and let us help you ignite the fire within.



116 Warn Pond Rd., Rte. 12 South, Oxford
607-843-2000

Hours: Mon., Tues., Wed., & Fri. 10 am-5 pm; Thurs. 10 am-6 pm; Saturday 9 am-1 pm

www.countrysideoxford.com

Follow us on Facebook for Recipes & Specials



Faber's

HOME & KITCHENS

*Proudly
Celebrating
37 Years in
Business*

FAMILY OWNED AND OPERATED IN OXFORD SINCE 1989



LOOKING FOR A NEW KITCHEN OR BATH...

COME TO THE #1 DESIGN CENTER IN CHENANGO COUNTY.

Our designers have over 50 years of combined experience.

**BUDGET TO CUSTOM,
WE CAN HELP!**

Call or stop in today to start your dream kitchen or bath.

Flooring • Windows

• Shower Doors

• Countertops-

Corian, Quartz, Granite & Laminate

**GREAT FINANCING
OPTIONS AVAILABLE
available to qualified buyers.
Stop in for details.**

Omega
Cabinetry

jsi
CABINERY
Affordable Fashion

wf
CABINERY™
A WELLBORN FOREST CO.
EST. 1986

CUBITAC
CABINERY



**Ask about
our
Contractor
Referral
Program**

• WINDOWS • DOORS • SIDING • AWNINGS
• SCREEN & 3 SEASON ROOMS • SHEDS • PERGOLAS



• VINYL FENCE • ALUMINUM FENCE • CEDAR FENCE



• VINYL RAILING • ALUMINUM RAILING



• COMPOSITE DECKING • POLY DECKING



• DOCKS • CARPORTS • GARAGES • UTILITY & AGRICULTURE BLDGS.

116 WARN POND RD., OXFORD - CALL FOR A FREE ESTIMATE 607-843-9834

Hours: Mon., Tues., Wed., & Fri. 10 am-5 pm; Thurs. 10 am-6 pm; Saturday 9 am-1 pm

**YOUR COMPLETE
BIG/LITTLE
HOME CENTER**

Kitchen Cabinets & Vanities

Omega Framed
Omega Full Access Frameless
WF Cabinetry
WF Capital
JSI Cabinetry
Cubitac Cabinetry
Avance Cabinetry
US Cabinet Framed
US Cabinet Frameless
Backwoods Amish Built RTA
Kitchen Kompact
Amerock Cabinet Hardware
Wurth Cabinet Hardware
Richeliu Cabinet Hardware
Rev-A-Shelf Cabinet Accessories

Outdoor Kitchens

Open Air Outdoor Cabinetry
Rock Run Aluminum Cabinetry

Countertops

WilsonArt Quartz
Silestone Quartz
Hanstone Quartz
Dekton
Sensa Granite
Coran Solid Surface,
Cambria
Laminate - Custom & Postform
Emerstone

Vanity Tops

Quartz & Granite
Remee Cultured Marble
Stone Central Granite or Silestone
Swanstone Solid Surface

Ceramic Tile & Stone

Florida Tile - Wall, Floor, Backsplash
Merola Tile - Wall, Floor, Backsplash
Lungaro Backsplash & Specialty Tile
Earthen Treasure Granite, Marble & Stone Tile

Sheet, Laminate & LVT Flooring

IVC Flexitec
Congoleum Triversa LVT Click
NextFloor StoneCast LVT Click
NextFloor Scratchmaster LVT Click
H*Flor Pikes Peak Click
H*Flor PRESTG Artistry Glue Down/Click
Trillium Cerameta LVT Glue Down
Generations Lineage LVT Glue Down

Carpet

NRF Select Carpet
Carpet Tile - Commercial & Residential
Indoor/Outdoor Carpet

Shower & Tub Walls

Samuel Mueller Solid Surface
Swanstone Solid Surface
Fibo Laminate
Wedi Tub & Shower Systems
Certified Wedi Pro Shower System Dealer

Shower Doors

Century Bathworks Shower Doors
Arizona Shower Door
Samuel Mueller Shower Doors
Samuel Mueller Bath Accessories
Grab Bars, Shelves, Towel Bars, Hooks,
Shower Niches/Storage Pods,
Shower Seats - Fixed & Stand Alone

Maidstone Claw Foot Tubs, Kitchen & Bath Oak

Pointe Stair & Railings Components
Wood, Metal, Cable

CycloVac Central Vacuum Cleaners

Railings & Porch Posts
Superior Plastics Vinyl
Superior Plastics Cable
Keylink Aluminum
Keylink Aluminum Cable
Regis Aluminum
GreenWay
Evolve Solid Plastic Railings

Decking

MoistureShield Composite
Evolve Solid Plastic Lumber & T&G Decking
Rhino Armadillo Decking
Aeratis Cellular PVC Porch Flooring
Western Larch Wood Decking
Lunawood Thermowood Decking
Tropical Hardwood Decking
Southern Yellow Pine Porch Flooring
Western Red Cedar Boards, Decking, Siding
Trimax Plastics Structural Plastic Lumber
Koma
EZ Pier & EZ Tube
ZipUP Underdeck Ceiling Panels

Fencing

Superior Plastics Vinyl
Keylink Aluminum
Masterlink Chain-link

Siding

Royal Vinyl Siding
Foundry Vinyl Shakes & Siding
MidAmerica Shutters & Siding Accessories
Koma Cellular PVC Boards & Trim
Metal Sales Steel Roofing & Wall Panels

Awnings - Retractable, Window, Door, Pergolas,

Sun Shades, Canopies

Aristocrat Awnings
Sunair Awnings
Agecraft Aluminum Awnings

Screen & 3 Season Rooms

Ballew's Aluminum Screen Rooms
Ballew's Alum. Carport & Patio Covers
Ballew's Mobile Home Roof Overs
Ballew's Aluminum & Vinyl 3 Season Rms
Aristocrat Aluminum & Vinyl 3 Season Rms

Outdoor Patio & Stone Veneers

Adorn Firepits, Planters & Pavers
Genstone Veneer Panels
Adorn Mortarless Stone Panels
Slimstone Stone Veneer Sheets

Boat Docks

Tommy Docks & Accessories
Techstar Dock Floats
Dockmaster Boat Ramps
DockEdge Dock Components & Accessories
American Muscle Dock Components & Accessories

Doors & Windows

NC Fiberglass & Steel Entrance Doors
Wood & Molded Prehung Interior Doors
Woodgrain Interior & Exterior Wood Doors
National Vinyl Sliding Doors
Larson Storm Doors
National Vinyl Replacement Windows
National Vinyl New Construction Windows

**American Steel Carports, Garages,
Ag Bldgs Catskill Sheds & Garages**

ENDWELL RUG & Floor

"THE BEST FLOOR SHOW IN ONEONTA"

**WATERPROOF FLOORING
HARDWOOD • AREA RUGS
CERAMIC TILE • SHEET VINYL
IN STOCK ROLLS OF
CARPET & VINYL
PET PROOF CARPET**



**IN-STOCK
FLOORING**

AS LOW AS 99¢ SQ. FT.

Ready for immediate installation.



INTEREST FREE FINANCING*

*Terms and conditions apply.

FREE ESTIMATES

**8 Carbon St., Oneonta, NY
607-432-1105**

ONEONTA STORE HOURS: MON. - SAT. 8-5 • Closed Sunday

EndwellRugOneonta | www.endwellrug.com

WE'RE HIRING!

Popular kitchen flooring materials

It's well-documented that kitchens are popular gathering spaces in homes. Perhaps that's one reason why homeowners looking to sell their homes direct so much attention to the kitchen before listing their properties. The real estate experts at Trulia note that emphasis is well worth it, as buyers inspect kitchens and primary bathrooms more than any other spaces in a home.

The smooth surface of laminate flooring makes it easy to clean, and it's resistance to water is another characteristic that appeals to homeowners

Cabinets and countertops garner considerable attention when pondering kitchen renovations, but it's equally important that homeowners pay attention to flooring when planning a remodel. The following are some notable flooring materials homeowners may want to consider as they plan to remodel their kitchens.

- Ceramic tile: Ceramic tile is a popular kitchen flooring material. The flooring experts at Avalon Flooring note that ceramic tile boasts an elegant and clean feel. Ceramic tile also is durable and easy to maintain. That simple maintenance includes ease of cleaning, as ceramic tile can be quickly cleared of spills and dirt tracked into a kitchen from outside. Ceramic tile also comes in a wide variety of colors, a versatility that undoubtedly adds to its popularity.

- Porcelain tile: Porcelain tile is another versatile option that can add instant aesthetic appeal to a kitchen. Porcelain tile is waterproof, which appeals to many homeowners looking to renovate their kitchens. Porcelain also is easily cleaned and durable, as flooring experts estimate that porcelain tiles can last anywhere from 15 to 50 years. Porcelain tile also requires minimal maintenance, which appeals to busy homeowners.

OUR BEST IN THE FIELD DEALS ARE HERE

For a limited time, save big on the all-new 1100 and 2100 Series. With a reliable diesel engine, our best-ever lift capacity, and intuitive tech like Crank Assist, dual-pedal HST, and a handy companion app, they're tougher and smarter than anything else out there.



BEST IN THE FIELD DEALS

1100/2100 SERIES

Stop In And Check Out Our Spring Promotions!

NORWICH OUTDOOR POWER EQUIPMENT

5876 County Rd. 32- East River Road, Norwich

607-334-4378



www.norwichope.com



8:00-5:00 Monday-Friday and 8:00-12:00 on Saturday

mahindra TRACTORS

OUTWORKING THE FIELD

Available 0% APR financing on purchases of selected new Mahindra tractor models from participating dealers' inventory on qualified purchases through Mahindra Finance US LLC. A down-payment may be required for selected tractor models. Financing information is made available by Mahindra Finance USA LLC for discussion purposes only and is not a commitment to finance any transaction. The information provided is not intended and should not be construed as legal, accounting, or tax advice. All financing is subject to credit review and approval and other terms and conditions and is at Mahindra Finance USA LLC's sole discretion. Offer available for a limited time only and subject to change without notice.



• **Engineered hardwood:** Engineered hardwood is a popular choice that many homeowners appreciate due to its strength and aesthetic appeal. This flooring material is made with real wood that's reinforced to make it even more durable and water-resistant. The result is an easily maintained product that also can last as long as solid wood flooring so long as it's well-maintained. Various shades, designs and textures are available, which makes this a versatile option.

• **Laminate flooring:** Laminate flooring is a budget-friendly option that's available in a wide range of styles, colors and patterns. The smooth surface of laminate flooring makes it easy to clean, and it's resistance to water is another characteristic that appeals to homeowners. But spills on laminate floors are best cleaned up quickly, and the material is vulnerable to warping and staining if exposed to moisture for extended periods of time.

These are some of the options homeowners can consider as they ponder which material to install on their kitchen floors as they remodel these popular rooms. HI264739

Palmer's

Trucks & Accessories LLC

Family Owned & Operated!
Knowledgeable and helpful customer service.

Route 12 South, Oxford
 (former Chenango Truck Location)
 607-843-2112
 palmerstrucks@gmail.com



Your One Source For DUMP BOXES, PLOWS, LIFT GATES and PLATFORMS

Plus... A Full Line Of Truck Accessories To Trick Out Your Ride.

CLIP 'N SAVE!

ASPHALT PAVING

**Residential • Commercial
 Driveways • Parking Lots
 New Work • Repairs • Seal Coating
 Concrete Sidewalks**



Driveway & Parking Lot Sealing

Yacano's PAVING
 607-336-1400

CLIP 'N SAVE!

Introducing the Elite Series –

Featuring 9/12 Roof Pitch with a loft interior to maximize your storage space



12x20 Classic Cottage

SALE \$9,400



14x24 Classic Cottage Garage

SALE \$9,700



12x20 Dutch Barn

Special Price \$5,900

Yoder's QUALITY SHEDS

FREE Delivery within 40 miles

Compare our quality and pricing, we think you'll be glad you did!

278 ATSWELL RD., RICHFIELD SPRINGS • 315-858-0841
 MON-FRI 8 AM - 4 PM • SAT. BY APPOINTMENT • CLOSED SUNDAY



Recycle The Right Way



- 1) All containers must be clean & covers removed
- 2) All paper dry & free of plastic
- 3) In the right bin

- #1 – see through plastic = #1 PETE
- #2 – colored plastic jugs & bottles = #2 HDPE Colored
- #2 – milky color plastic jugs & bottles = #2 HDPE Natural
- #5 – tubs = #5 PP
- all metal food & drink cans = Tin Cans
- clear glass food & drink containers = Clear Glass
- most wine bottles = Green Glass
- most beer/yeast bottles = Brown Glass
- junk mail/magazines/paper = Junk Mail
- newspaper/pennysaver = Newsprint
- cardboard boxes / kraft paper = Cardboard*

* Waxy or plastic coated cardboard is garbage.

All **CLEAN** recycling is **FREE!**

3 Convenient Locations

1) NORTH NORWICH TRANSFER STATION

– 6701 NYS Hwy 12, Norwich
M 8–noon, T-Sat 8–4

2) BRISBEN TRANSFER STATION

– 177 Coutermarsh Rd., Greene
M 8–noon, T-Sat 8–4

3) PHARSALIA LANDFILL

– 439 CR 47, Norwich
M–F 8–4, Sat 8–noon



Watch for upcoming recycling programs at the landfill and transfer stations.

**For all recycling and trash disposal questions
call 607-337-1792.**

The basics of molding replacement projects

The right renovation project can change the look and feel of a home. Major undertakings like a kitchen remodel might be the first projects homeowners think of when considering ways to transform their home interiors, but small projects also can go a long way toward remaking spaces in a home.

The molding in a home is a small yet important feature that can affect the look and feel of interior spaces. New molding might not offer the wow factor of a kitchen redesign, but new molding still has a dramatic effect and is well worth the investment of time and effort, particularly if existing molding has begun to show signs of wear and tear.

When should molding be replaced?

Replacement may be necessary when molding is showing signs of rot or damage or when paint is peeling. Rotting molding may feel soft, while warping and swelling indicates the molding is damaged and in need of replacement. Molding that is detaching from the walls also may need to be replaced. But such a condition also can occur as a house is setting or due to seasonal fluctuations of humidity within the home. If this occurs with molding that still looks good, then re-nailing may be the best approach.

What should I know about molding before replacing it?

Molding comes in many shapes, styles and sizes. Molding helps to maintain cohesion in spaces throughout a home, so it's necessary to identify the current type of molding that's in a home if you only need to replace pieces here and there. If all of the molding must be replaced, then you may have more flexibility. Molding styles include colonial, ogee, cove, and step and double step. The height and thickness of the molding as well as which material type, such as solid wood or PVC,



also may determine the right product for your home. Working with an interior designer and contractor can help homeowners who are uncertain about their existing molding make the right choice when installing a new product.

How much does molding cost?

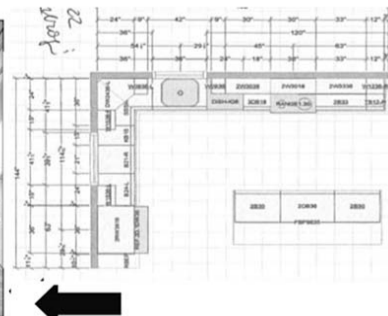
The cost to install new molding will be determined by a number of variables unique to each home, including where the home is located, which materials homeowners choose, which molding is being replaced (i.e., crown molding, baseboard molding, or both), and how much is being replaced. The renovation experts at Angi.com estimate that the range for a crown molding replacement project is between \$600 and \$2,100. Angi.com notes a similar price range for a baseboard molding replacement project, which typically runs between \$800 and \$2,250. Replacing fading or damaged molding can subtly but effectively transform interior spaces in a home. Homeowners are urged to work with a contractor to identify the right molding products for their homes. HI264737

Now Selling Cabinets

Let Our Designer Create A Cabinet Layout For You



- CABINETS
- SINKS & FAUCETS
- COUNTERTOPS
- FLOORING
- TILE



COUNTERFITTERS LLC

Your
One-Stop
Kitchen Dream
Shop!

2319 State Highway Route 20
Carlisle, NY
(518) 833-2740

Facebook@WarrenCounterfitters • Counterfittersandmore@gmail.com

Cook's

SEPTIC SERVICES

WE'RE THE TEAM TO TRUST FOR PROFESSIONAL SEPTIC SERVICES

With over 40 years of experience, you can trust our team to provide quality septic inspections, septic tank pumping, septic repairs and septic installation services.

Clients trust us because:

- We're fully insured
- We pay attention to details
- We're prompt, reliable and professional
- We provide high-quality work at competitive prices

There's no job too big or small for our team.

Call now to schedule the septic services you need.

Proudly serving the Chenango, Delaware and Otsego County areas.

- Septic Tank Pumping
- Pump Truck Services
- Installations
- Repairs
- Septic Inspections
- Residential & Commercial



CALL TODAY & JOIN OUR FAMILY OF SATISFIED CLIENTS

607-648-5677



Steel Sales Inc.

OPEN TO THE PUBLIC!

P.O. Box 539, 8085 State Hwy. 12
Sherburne, NY 13460

WE SELL

Metal Roofing & Siding



CUSTOM FABRICATION

Bucket Liners



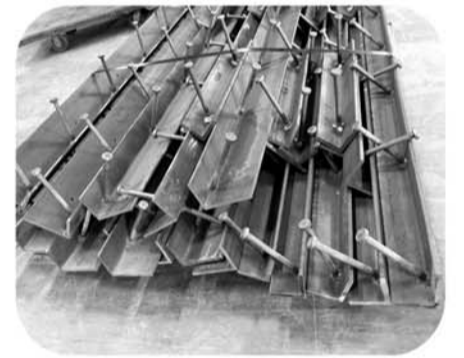
Custom Wear Plates



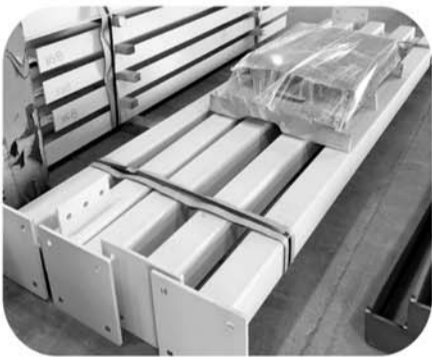
Connection Plates



Curb Angles



Columns



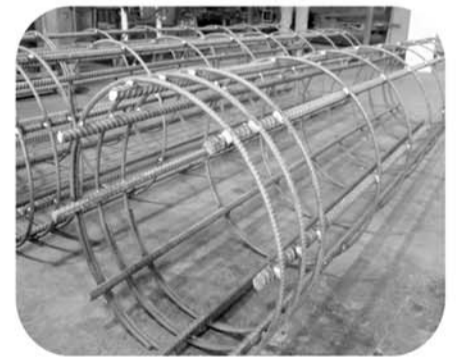
Stairs & Handrails



Fabricated Rebar



Rebar Cages



www.SteelSalesinc.com

800-238-7833 or 607-674-6363

Fax: 607-674-9706

Our Customers Are Our First Priority

Our Pledge...

Our Customers are our first priority. Reese-Marshall is here to serve you with your heating and cooling needs. We Pledge to constantly reaffirm this with our actions, which we have built our reputation on.

We Offer...

- Free estimates for all installations
- Automatic delivery with a guarantee
- 24-hour emergency service, 365 days a year
- A variety of budget and burner service plans
- People who care about providing quality service

Our Area of Service...

Reese-Marshall Co. Inc.'s office and storage facility is located on County Road 32, in Norwich. Our service area extends to Norwich and the following areas:

- Oxford - McDonough - Guilford - Preston
- Mt. Upton - Gilbertsville - Morris
- South New Berlin - New Berlin - Edmeston
- South Edmeston - West Edmeston - Pittsfield
- Sherburne - North Norwich - Earlville - Columbus Smyrna
- Otselic - South Otselic - Pitcher - Plymouth
- Sidney - Bainbridge
- Hamilton - Madison - Morrisville - Brookfield

Quality Products...

Reese-Marshall Co. Inc. carries a full line of quality fuels including B-10 Heating Oil, Diesel, Gasoline and Propane Gas.

Our Burner Service Department is fully equipped to handle any repair or installation.



Safe Quality Heating Systems

Thermo Pride

Buderus

Rinnai

**Thinking of a new heating system?
Don't hesitate to call for a free written estimate.**



REESE-MARSHALL

We make warm friends and keep you cool.

since 1942

6254 County Road 32, Norwich, NY 13815

PHONE (607) 334-3633

www.reesemarshall.com • email: info@reesemarshall.com

Upgrade Your Floors For Less.

National FLOOR CENTER

Upstate New York's BEST and LARGEST selection of tile, hardwood, carpet and vinyl at the area's LOWEST PRICES.

SPRING IN-STOCK FLOORING SALE!

Fusion Summit Andes Oak Click Lock Vinyl



4" Wide X 48" Long 20 Mil Wear Layer
Reg. \$5.99 sq. ft.

Sale **\$2.99** /sq. ft.

Fusion Hybrid Reserve Oak Click Lock Vinyl



6" Wide, Random Board Length 20 Mil Wear Layer
Reg. \$5.99 sq. ft.

Sale **\$2.99** /sq. ft.

Lauzon Red Oak Natural 3/4" Solid Hardwood



3- 1/4" Wide
Reg. \$7.59 sq. ft.

Sale **\$5.49** /sq. ft.

Lauzon Red Oak Azaro 3/4" Engineered



4- 1/8" Wide Exclusive Grade
Reg. \$9.19 sq. ft.

Sale **\$5.49** /sq. ft.

Shaw 18x36 Nylon Carpet Tile



Reg. \$4.99 sq. ft.

Sale **\$1.39** /sq. ft.

Grey Plush Textured Carpet



45 oz. Cut & Loop Pattern
Reg. \$3.79 sq. ft.

Sale **\$1.49** /sq. ft.

FREE DELIVERY
Broome, Chenango & Delaware Counties



Step Up To National Floor Center...

National FLOOR CENTER

National Floor Center Main Showroom

46 South Washington Street
Binghamton, NY 13905

607-772-1212

Open Mon-Fri 9 am- 7 pm, Sat 10 am-5 pm

FOLLOW US ON FACEBOOK

www.nationalfloorcenter.com